



Room 2

37A&B Warwick Street , Leamington Spa, CV32 5JX

£450 Per Month



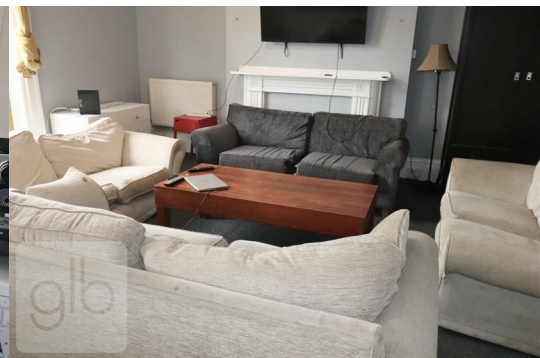
****Double Room in HMO In A Central Location Perfect For Both Students & Professionals****

Fully Furnished Double Room in Spacious 9 bedroom house share in a beautiful Regency building, located right in the heart of Leamington spa's town Centre. Excellent access to local amenities and transport, walking distance to the supermarkets, bars and restaurants, bus stops and the train station, making it a perfect location for both working professionals and students.

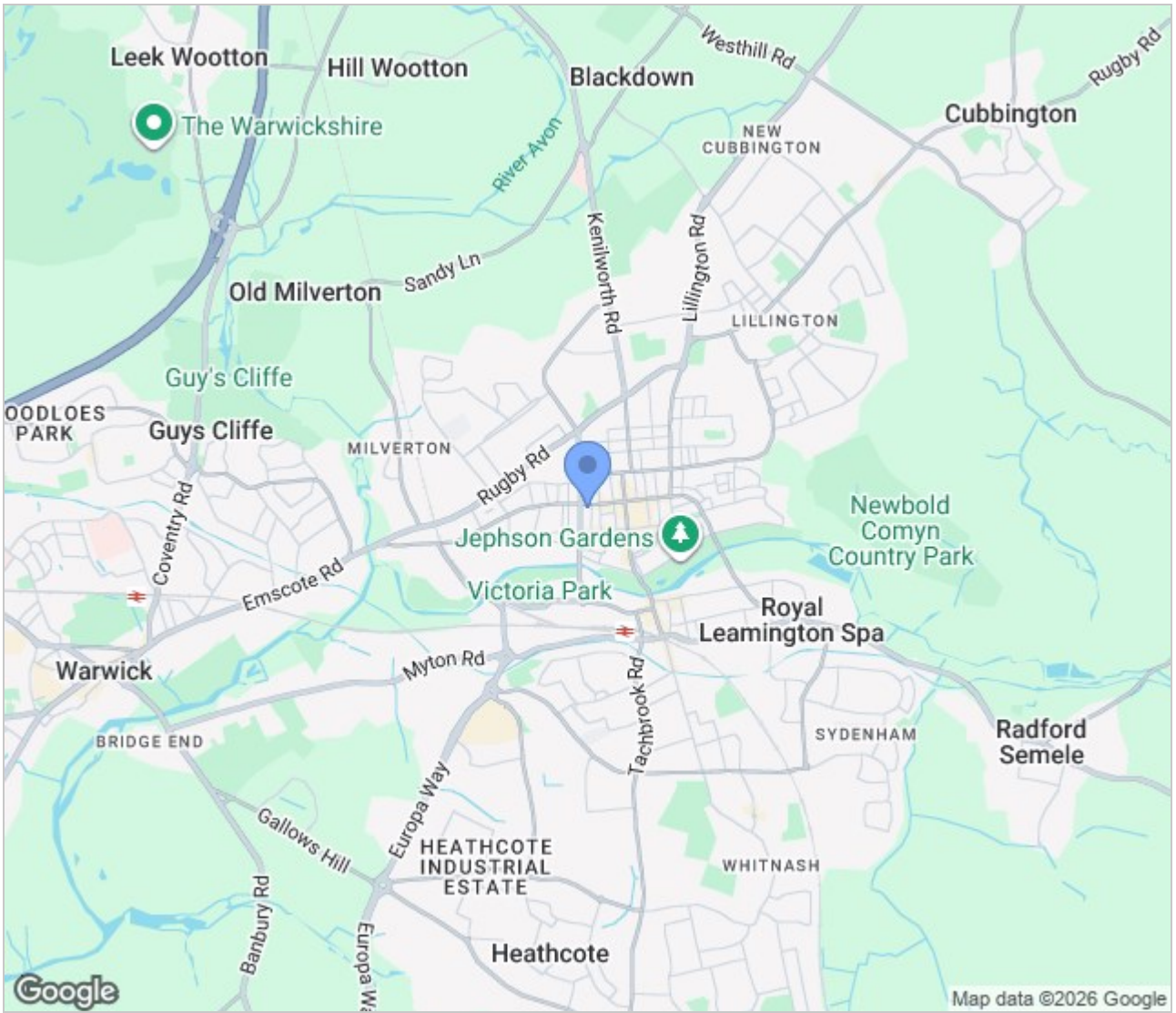
This property briefly comprises of the following:

- * Large open plan Kitchen & Living Area
- * Breakfast Bar
- *Lounge Area with 4 Sofas & Large TV
- * 2nd Kitchen (ensuring excellent access for the whole household)
- * 4 Bathrooms
- * 9 Bedrooms

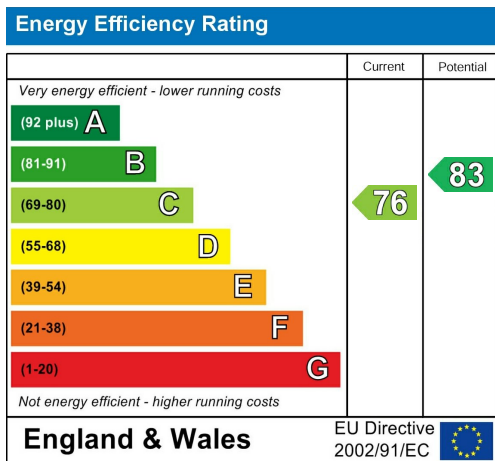
The property comes fully furnished to suit all of your studies & co-living experience.



Area Map



Energy Efficiency Graph



These particulars, whilst believed to be accurate are set out as a general outline only for guidance and do not constitute any part of an offer or contract. Intending purchasers should not rely on them as statements of representation of fact, but must satisfy themselves by inspection or otherwise as to their accuracy. No person in this firm's employment has the authority to make or give any representation or warranty in respect of the property.